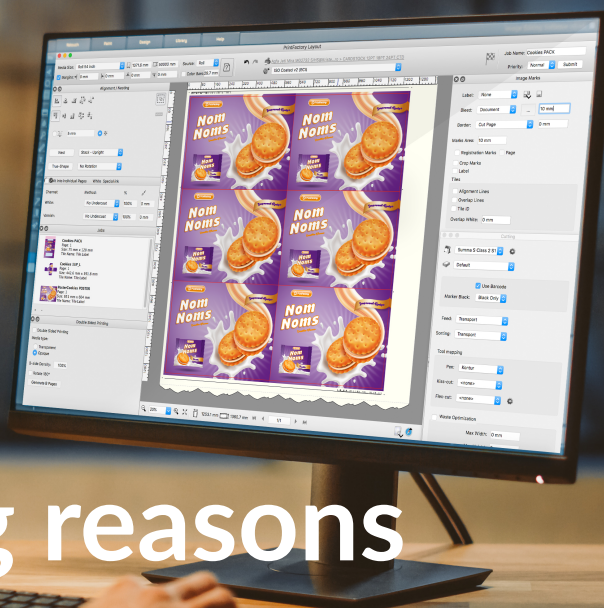




# Arrange a free demo



## #10 reasons Compelling reasons to try PrintFactory

A single vendor platform that delivers everything needed to produce large format digital printing, across any digital print market, for all of your devices - printers and cutters. PrintFactory produces work quicker, and more accurately than any other comparable system, at a fraction of the price of end-to-end workflows on the same scale.

Thanks to our XML architecture, there are extensive integration options - allowing total scalability - it is designed to grow alongside your needs. And our industry leading VISU™ device-link colour engine is second to none, and affordable. We've compiled 10 compelling reasons why you should try PrintFactory for yourself.



#1

**Better quality output** - including proof matching colour across all your devices and substrates with perfect greys and more vibrant spot colours.



#3

**Faster RIPping speed on like for like platforms** - including RIPping and printing of 4 jobs simultaneously.



#2

**Minimum 15% Ink Saving across the board** - usually 20% plus with provable results.



#4

**An integrated Editor app** - that can be used on any platform (macOS, Windows). Work remotely from the production site and with unlimited seats you can reduce Adobe CC license requirements by 90%.



#5

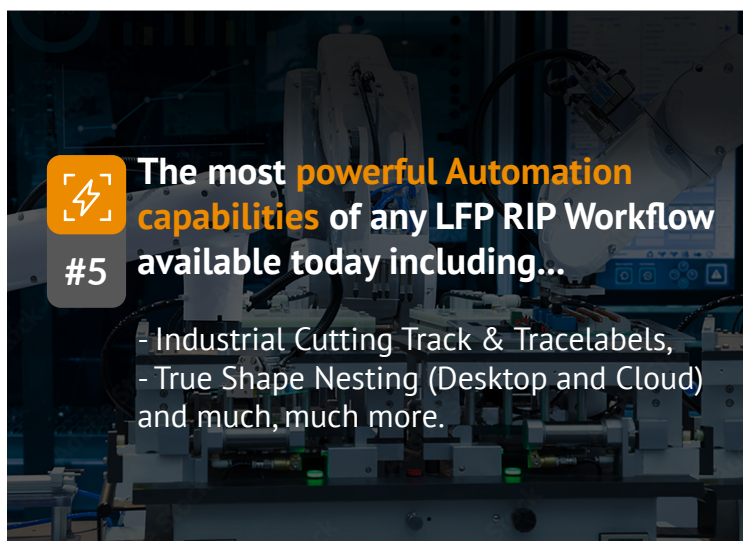
**The most powerful Automation capabilities of any LFP RIP Workflow available today including...**

- Industrial Cutting Track & Tracelabels,
- True Shape Nesting (Desktop and Cloud) and much, much more.



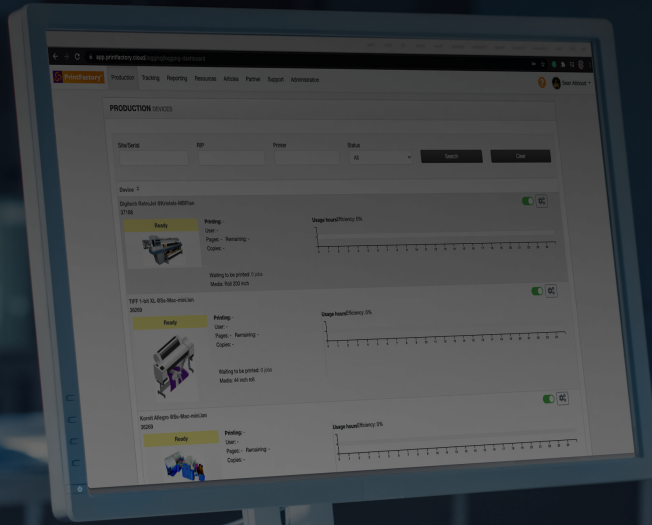
#6

**Automated and Manual** advanced (Desktop and Cloud) Nesting tools for maximum media saving and intelligence-lead delivery.





# Arrange a free demo



## Secure Cloud app

#7

for automatic back-up of all desktop RIP configurations, profiles and custom-made elements and also allows for automatic distribution to other RIPs in the production site/s.



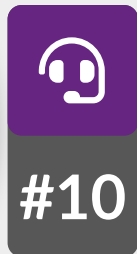
#8

**The easiest** - and quickest media profiling tool available today with the ability to build multiple advanced Device Link profiles at the same time without any specialist colour knowledge at all.



#9

**Advanced iterative** - re-calibration of media profiles to allow perfect matched load balancing of work across printers of the same model, ink-set and media use.



#10

## Unrivalled support team

Sales and technical guidance to support you in the smooth implementation of PrintFactory Cloud with minimal disruption, training and on-boarding collateral available with in-app videos and e-training.



### Better Printing, Bigger Profits



Follow us